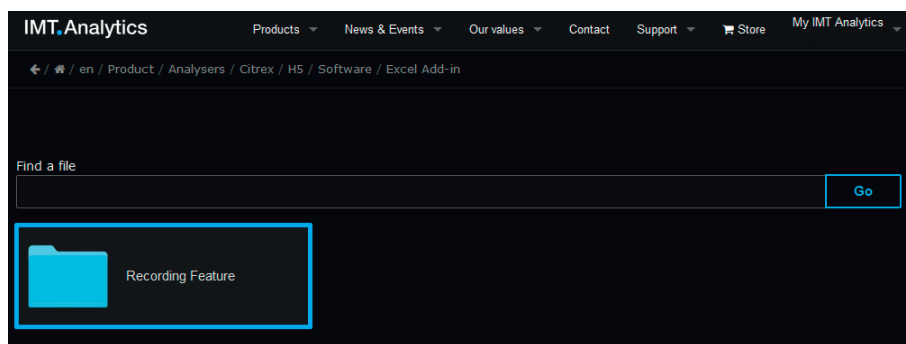
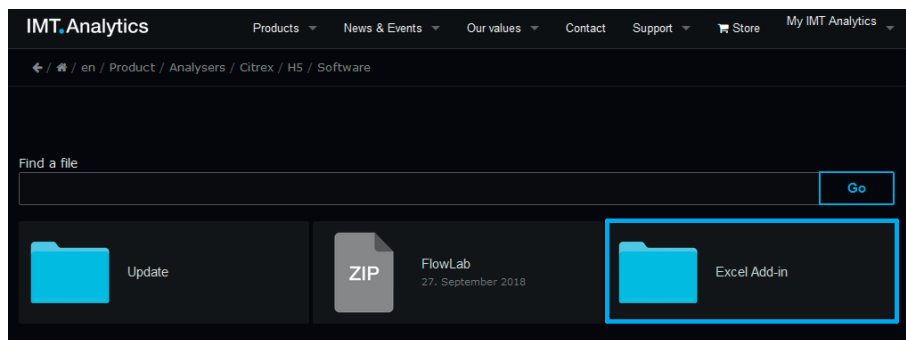
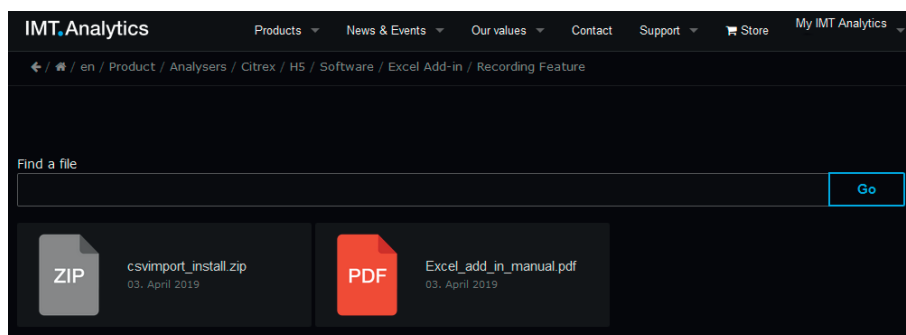


My IMT Analytics – Extranet



Content of folder «Recording_feature»:



Add-in compability

The excel add-in is available for

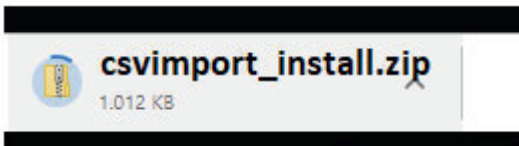
- Windows 7
- Windows 10
- x32 and x64 based PC
- Microsoft Office Excel 2013 and above

Excel Add-in manual

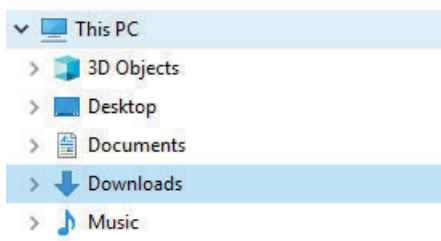
CITREX H5 – CSV importer instruction

Download and installation

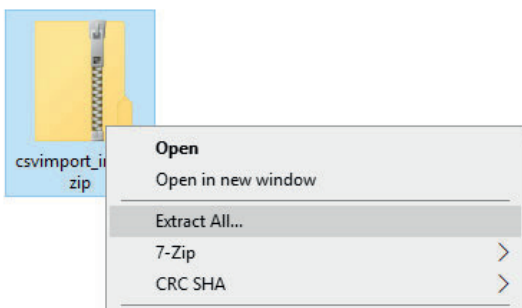
1. Ensure that Microsoft Office Excel is closed
2. Download csvimport_install.zip



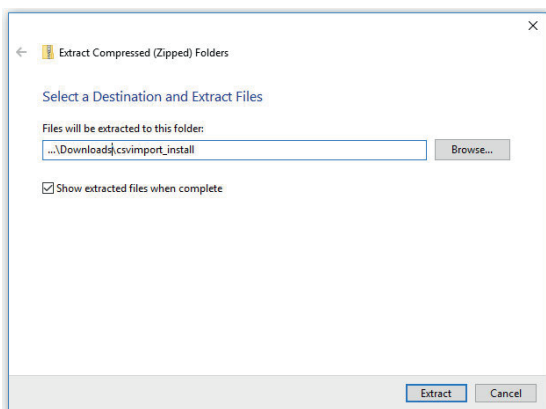
3. Open File Explorer and navigate to “Downloads”



4. Extract the csvimport_install.zip



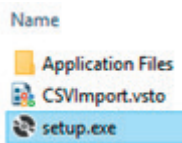
5. Confirm with “Extract”



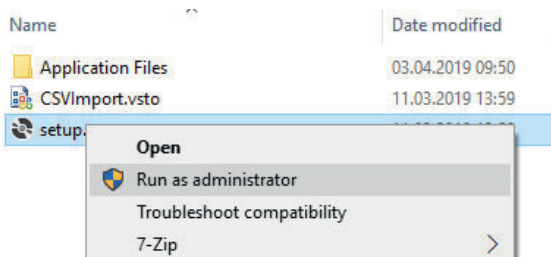
Excel Add-in manual

CITREX H5 – CSV importer instruction

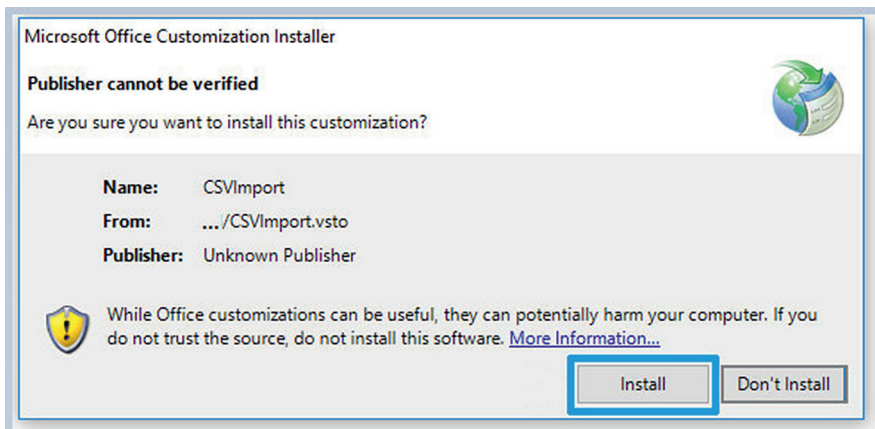
6. Navigate to csvimport_install – install. The folder “install” contains setup.exe



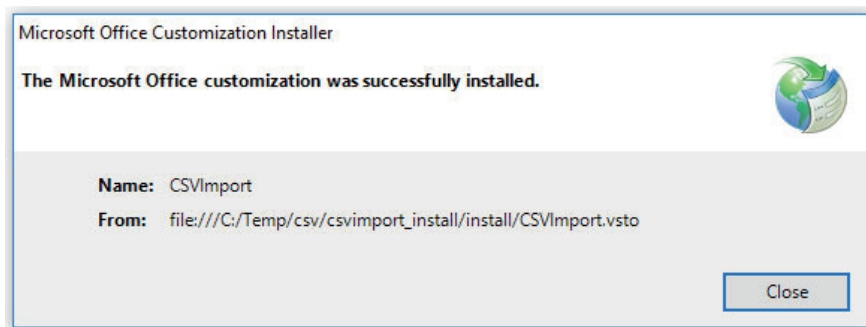
7. Right click “setup.exe” – Run as Administrator



8. Confirm with “Install”



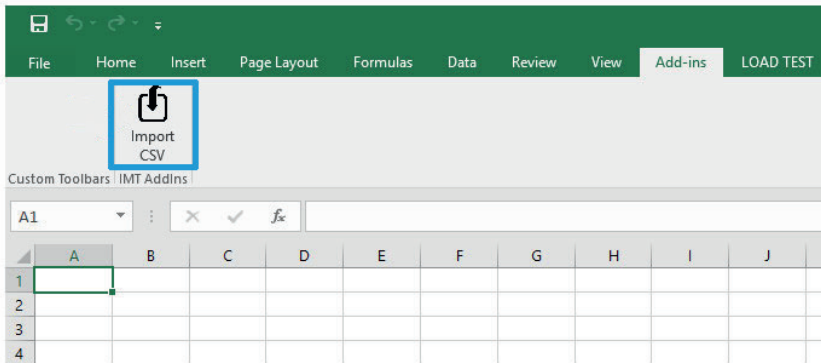
9. Wait for the successful installation and confirm with “close”



Excel Add-in manual

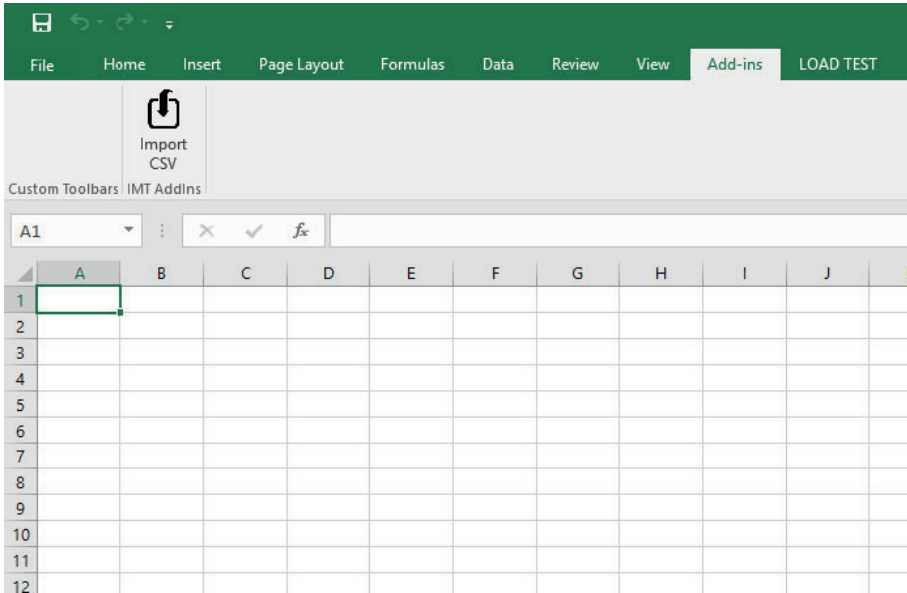
CITREX H5 – CSV importer instruction

10. Open Microsoft Office Excel. The CSVImport Add-in is now added to your Microsoft Excel Add-ins

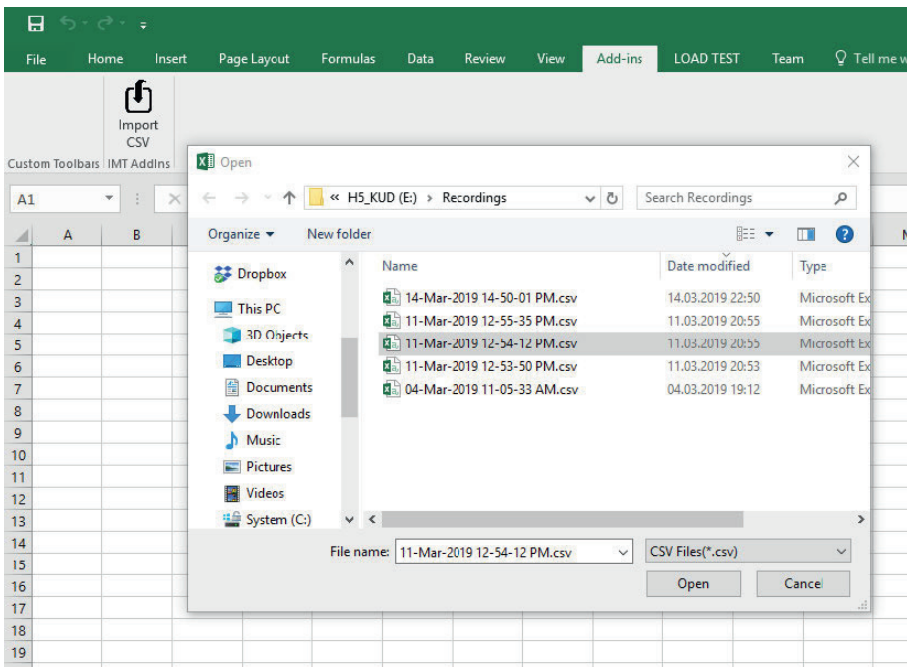


Import CITREX H5 measurement report (.csv)

1. To import a measurement report, press on the “Import CSV” Add-in icon



2. Select the record from the USB stick and confirm with “open”



Excel Add-in manual

CITREX H5 – CSV importer instruction

- Imported report (including User, Date, Settings, Statistics, Measurement Data):

Parameter	Unit	Min	Max	Mean	Breaths Time
Flow	l/min	-45.4	50.3	0.5	*****
FF Exp	l/min	35.2	53.6	44.5	17
FF Insp	l/min	415	60.8	48.8	17
Pmean	mbar	0	0	0	17
Ppeak	mbar	0	0.1	0	17
Pplateau	mbar	---	---	---	17
P Atmo.	hPa	1007	1008	1007	*****
Pchance	mbar	-1.06	-0.1	-0.4	*****
P Diff	mbar	-0.2	0	-0.36	*****
P High	bar	-0.03	0.02	-0.01	*****
PEEP	mbar	0	0	0	17
Volume	ml	0	309.1	389.6	*****
Ve	l/min	13.5	15.4	14.5	17
Vi	l/min	13.8	17.8	15.7	17
Vae	ml	538.7	978	743.2	17
Vai	ml	568.9	908.5	743.2	17
Te	s	1.36	5.16	1.6	17
Ti	s	1.24	2.37	1.57	17
Ti/Tot	%	31.1	63.7	51.3	17
Rate	l/min	8	24.8	20.3	17
IE	---	12.2	16.1	0.31	17
Carat	ml/mbar	---	---	---	17
Temp.	C	23.6	31.4	30.4	*****
O2	%	16.9	91.1	17.5	*****

Time	Flow	FF Exp	FF Insp	Pmean	Ppeak	Pplateau	P Atmo.	Pchance	P Diff	P High	PEEP	Volume	Ve	Vi	Vae	Vai	Te	Ti	Ti/Tot	Rate	IE	Carat	Temp.	O2	
12-54-12:388	0	44.4	52.5	0	0	---	1007	-0.12	-0.1	0	0	463.8	17.6	20.3	529	658	0.3	0.38	51.6	31.6	11.1	---	23.8	17	
12-54-13:078	0	---	---	---	---	---	1007	-0.12	-0.1	0	---	463.8	---	---	---	---	---	---	---	---	---	---	---	23.8	17
12-54-13:088	0	---	---	---	---	---	1007	-0.12	-0.1	0	---	463.9	---	---	---	---	---	---	---	---	---	---	---	23.8	17
12-54-13:178	0	---	---	---	---	---	1007	-0.12	-0.1	0	---	463.9	---	---	---	---	---	---	---	---	---	---	---	23.8	17
12-54-13:188	0	---	---	---	---	---	1007	-0.12	-0.1	0	---	470.1	---	---	---	---	---	---	---	---	---	---	---	23.8	17
12-54-13:278	0	---	---	---	---	---	1007	-0.12	-0.1	0	---	470.1	---	---	---	---	---	---	---	---	---	---	---	23.8	17
12-54-13:288	0	---	---	---	---	---	1007	-0.11	-0.1	-0	---	470.2	---	---	---	---	---	---	---	---	---	---	---	23.8	17
12-54-13:378	0	---	---	---	---	---	1007	-0.11	-0.1	-0	---	470.2	---	---	---	---	---	---	---	---	---	---	---	23.8	17
12-54-13:388	0	---	---	---	---	---	1007	-0.11	-0.1	-0	---	470.3	---	---	---	---	---	---	---	---	---	---	---	23.8	17
12-54-13:478	0	---	---	---	---	---	1007	-0.11	-0.1	-0	---	470.3	---	---	---	---	---	---	---	---	---	---	---	23.8	17
12-54-13:488	0	---	---	---	---	---	1007	-0.11	-0.1	-0	---	470.3	---	---	---	---	---	---	---	---	---	---	---	23.8	17
12-54-13:578	0	---	---	---	---	---	1007	-0.11	-0.1	-0	---	470.3	---	---	---	---	---	---	---	---	---	---	---	23.9	17
12-54-13:588	0	---	---	---	---	---	1007	-0.11	-0.1	-0	---	470.3	---	---	---	---	---	---	---	---	---	---	---	23.9	17
12-54-13:678	0	---	---	---	---	---	1007	-0.11	-0.1	-0	---	470.3	---	---	---	---	---	---	---	---	---	---	---	23.9	17
12-54-13:688	0	---	---	---	---	---	1007	-0.11	-0.1	-0	---	470.4	---	---	---	---	---	---	---	---	---	---	---	23.9	17
12-54-13:778	0	---	---	---	---	---	1007	-0.11	-0.1	-0	---	470.6	---	---	---	---	---	---	---	---	---	---	---	30	17
12-54-13:788	0	---	---	---	---	---	1007	-0.11	-0.1	-0	---	470.7	---	---	---	---	---	---	---	---	---	---	---	30	17
12-54-13:878	0.1	---	---	---	---	---	1007	-0.12	-0.2	-0	---	470.8	---	---	---	---	---	---	---	---	---	---	---	30	17
12-54-13:888	0.1	---	---	---	---	---	1007	-0.11	-0.2	-0	---	470.8	---	---	---	---	---	---	---	---	---	---	---	30	17
12-54-13:978	0.1	---	---	---	---	---	1007	-0.12	-0.2	-0	---	470.8	---	---	---	---	---	---	---	---	---	---	---	30.1	17
12-54-14:068	0.1	---	---	---	---	---	1007	-0.12	-0.2	-0	---	470.8	---	---	---	---	---	---	---	---	---	---	---	30.1	17

- Create your own charts from the measurement data using the Excel Charts

Example charts:

